

BALL FLOAT STEAM TRAP (SCREWED/FLANGED)

Description :

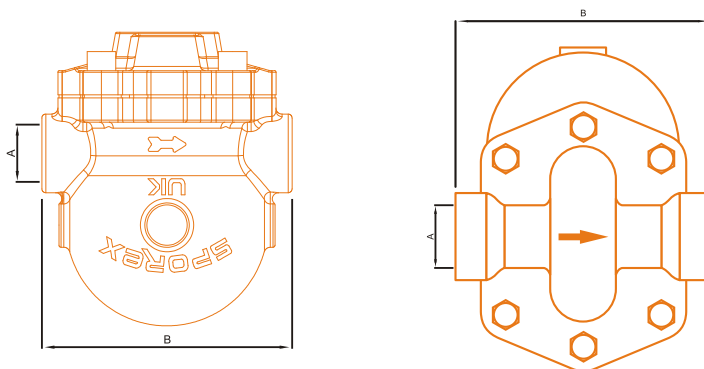
Ball Float Steam Trap is meant for timely removal of Condensate from the Pipe Line without compromising on the energy (steam) losses. It's a Mechanical Steam Trap which works on the principle of Difference between Densities of Steam and Condensate.

Features :

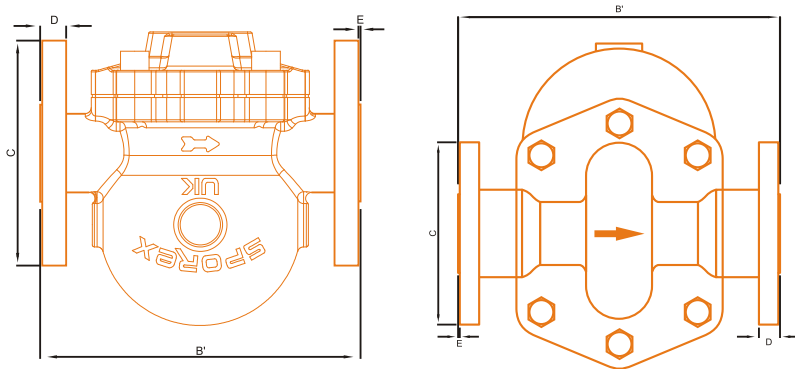
- ➔ Screwed Female Ends To BS 21 / NPT
- ➔ Flanged Ends to PN 16 RF
- ➔ All Stainless Steel Working Parts
- ➔ With Thermostatic Air Vent
- ➔ Painted with Heat Resistant Paint (upto 400°C)
- ➔ Drain Plug provided for Removal of Impurities



ITEM CODE # SG - 403



ITEM CODE # SG - 404



Sizes / Dimensions (mm)

Size	A	B	B'	C	D	E
DN 15	1/2" BSP	92	150	95	14	2
DN 20	3/4" BSP	92	150	105	16	2
DN 25	1" BSP	95	160	115	16	2
DN 40	1.1/2" BSP	230	320	150	18	3
DN 50	2" BSP	230	320	165	20	3

B.V.M. MANUFACTURERS & EXPORTERS



BALL FLOAT STEAM TRAP (SCREWED/FLANGED)

Limiting Conditions : In accordance with ISO 6552

Body Design Conditions PN 16

Cold Hyd. Test Pressure 24 bar g

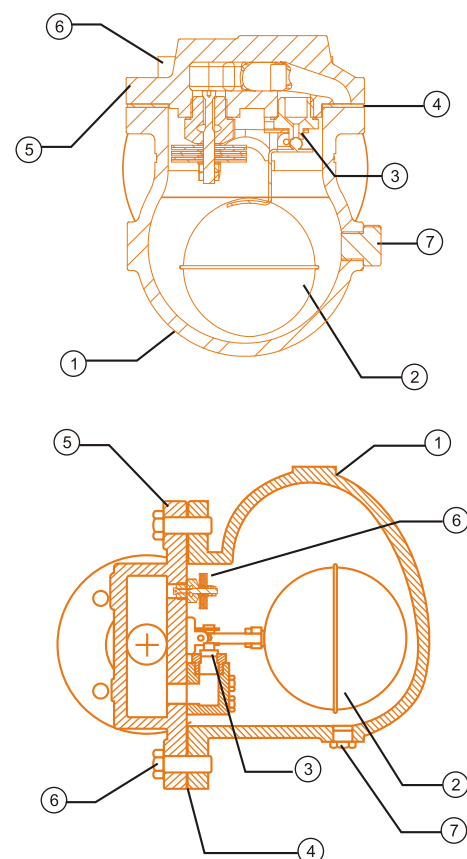
PMA - Maximum Allowable Pressure 16 bar

TMA - Maximum Allowable Temperature 250°C

Δ PMX - Max. Differential Pressure	
SG404-4.5	4.5 bar
SG404-10	10 bar
SG404-14	14 bar

Materials of Construction

NAME OF PART	MATERIAL	STANDARD
(1) Body	D.I. / SGI	GGG-40
(2) Float Assembly	Stainless Steel	AISI 304
(3) Valve Seat	Stainless Steel	ASTM A276 Type 410
(4) Gasket		Non-Asbestos
(5) Cover	D.I. / SGI	GGG-40
(6) Fastners	Alloy Steel	ASTM 193 B7/A194 2H
(7) Drain Plug	Stainless Steel	ASTM A276 Type 304



Discharge Capacity

TRAP DISCHARGE CAPACITY (kg/hr)										
PMO (bar)	Size	DIFFERENTIAL PRESSURE (bar)								
		1	2	3	4.5	6	8	10	12	14
4.5	DN 15, 20	275	345	395	490	---	---	---	---	---
	DN 25	940	1140	1330	1520	---	---	---	---	---
	DN 40, 50	3270	3790	4280	5040	---	---	---	---	---
10	DN 15, 20	150	180	210	255	310	400	430	---	---
	DN 25	660	775	880	1030	1190	1390	1610	---	---
	DN 40, 50	2680	2910	3105	3410	3710	4405	5110	---	---
14	DN 15, 20	145	170	195	225	275	340	390	430	490
	DN 25	450	500	570	660	730	850	960	1070	1180
	DN 40, 50	2280	2755	2965	3170	3370	3895	4380	4805	5175

Application : Ideally suited for Driers, Unit Heaters, Heat Exchangers and Injected Vessels etc.

B.V.M. MANUFACTURERS & EXPORTERS

